



NEWS & VIEWS

Achievement & Enjoyment

Headteacher Mr S Bowsher



Mr Bowsher's Headteacher Comment:

Another great week has passed at Larchwood. It didn't start in the best fashion with burst pipe and the subsequent flood, but in true Larchwood spirit, it was stopped, cleared up and we were up and running by 10.30. The team effort and understanding from parents was fantastic. It was noticeable how many children used the time wisely to go on TTRS to take part in the competition or read their books.

In celebration assembly I give out many certificates including those for star of the week, class points, reading at home and attendance. I also give out certificates occasionally to children who have read over 1 million words. That is a huge number and which Accelerated Reader programme keeps track of. It is usually Year 5 and 6 children who get one of these certificates as they are the more fluent and faster readers.

When I found out that one of 6R children had achieved their million words last week, I discussed with the class how many words they thought I would have read in my life. It was a very rough estimate based on the time between when I was 10 and now I am 50. They came to the conclusion I had probably read 146 million words just in books. When you factor in reading newspapers, emails, documents and more it is probably over a billion. That is a staggering fact. 6R even made me a 146 million word certificate!

Next week is another action packed one. We have 45 visitors coming from China on Monday morning to see the school and then the choir are off to the 02 on Wednesday to perform in young voices.

On the last page are pictures I took this week of the books each class is reading for their English lessons this half term. Take the opportunity to talk about your child's class book with them before reading some of those 146 million words! Have a great weekend.

Times Table Rock Stars (TTRS) Battle of the Bands

Well done to everyone for the TTRS scores this week. 3C won against 3M, 4B won against 4T, 5L won against 5P and 6H won against 6R. It is early days, so it is all to play for.

	W	D	L	Points
3C	1	0	0	3
4B	1	0	0	3
5L	1	0	0	3
6H	1	0	0	3
3M	0	0	1	1
4T	0	0	1	1
5P	0	0	1	1
6R	0	0	1	1

Week 5 battles:

3M vs 4T

3C vs 4B

5L vs 6H

5P vs 6R



DISCOVERY
EDUCATIONAL TRUST

Chief Executive Officer: Mr R Duff

Larchwood Primary School is proud to be part of the Discovery Educational Trust



www.larchwoodprimary.co.uk



@LarchwoodPS



office@larchwood.essex.sch.uk

Poor Parking

This week I have had multiple complaints from parents about the parking on the double yellow lines on Larchwood Gardens by the care home and in Hazelwood Gardens. On Tuesday I went up there and moved the cars on and funnily enough no one else parked there. I know that this is only a couple of irresponsible parents, but it is dangerous, causes an obstruction for the bus and other cars and, most importantly, puts our children at risk. Please be more responsible!

Word of the Week

Reception	Year 1	Year 2	Year 3	Year 4	Year 5	Year 6
Similar	Cycle	Flexible	Criteria	Clarify	Coherent	Acquire



Mr Bowsher's Superstar Award

Emily in 2W for demonstrating the values of friendship and responsibility.



Stars of the Week

RA	RT	1B	1G	2W	2P	3C
Charlie	Tyler	George	Hannah	Nasema	Riley	Carley
3M	4B	4T	5L	5P	6H	6R
Freya	Zac	Sonny	Betsy	Alexis	Kieran	Charlie.C



Reading at Home

Well done to the 3 classes with 100% and 4B and 5P who are the joint winners of the trophy.

Class	Table shows numbers of children and percentages who read from Monday 13 January to Friday 17 January			Percentage Read 4 & 5 times %
	Less than 4	4	5	
RA	3 (10%)	5 (17%)	22 (73%)	27 (90%)
RT	3 (11%)	6 (21%)	19 (68%)	25 (89%)
1B	1 (4%)	6 (21%)	21 (75%)	27 (96%)
1G	3 (10%)	2 (7%)	24 (83%)	26 (90%)
2P	2 (6%)	4 (14%)	23 (80%)	27 (94%)
2W	4 (13%)	6 (21%)	19 (66%)	25 (87%)
3C	4 (23%)	5 (16%)	19 (61%)	24 (77%)
3M	1 (4%)	3 (10%)	25 (86%)	28 (96%)
4B	0 (0%)	2 (7%)	28 (93%)	30 (100%)
4T	2 (4%)	7 (23%)	22 (73%)	29 (96%)
5L	1 (3%)	3 (11%)	23 (86%)	26 (97%)
5P	0 (0%)	2 (7%)	24 (93%)	26 (100%)
6H	0 (0%)	5 (19%)	22 (81%)	27 (100%)
6R	3 (10%)	3 (10%)	24 (80%)	27 (90%)
Total				86.6%



DISCOVERY
EDUCATIONAL TRUST

Chief Executive Officer: Mr R Duff

Larchwood Primary School is proud to be part of the Discovery Educational Trust



www.larchwoodprimary.co.uk



@LarchwoodPS



office@larchwood.essex.sch.uk



Diary Dates

Below are some of the of the important dates coming up this term.

Monday 20 January	Chinese students visiting school for the morning
Wednesday 22 January	Young Voices at the 02
Thursday 30 January	Don Rae in with Year 1 and 2
Wednesday 12 February	Parent Consultations 15.30-18.00
Thursday 13 February	Parent Consultations 17.30-20.00
Friday 14 February	Break up for half term
Monday 24 February	Return to school
Thursday 6 March	LPPA quiz night
Friday 7 March	Larchwood World Book Day
Friday 7 March	Come and read with your child morning
Friday 14 March	LPPA non-uniform day
Wednesday 19 March	Don Rae with Year 3
Friday 21 March	LPPA Easter pop-up shop
Tuesday 1 April	Reports go home
Thursday 3 April	Easter discos
Friday 4 April	Break up



Weekly Attendance

Well done to the 3 classes with over 98%.

Weekly Attendance – week commencing Monday 13 January 2025

Class	RA	RT	1B	1G	2W	2P	3C	Whole school
Attendance	96.3%	92.7%	96.3%	98.3%	98.6%	95.9%	95.3%	95.7%
Class	3M	4B	4T	5L	5P	6H	6R	
Attendance	96.7%	96.5%	98.3%	95.4%	92.5%	92.1%	94.8%	

1 st	2 nd	3 rd
2W	1G & 4T	3M



Yearly Attendance

Yearly Attendance – from 3 September 2024

Class	RA	RT	1B	1G	2W	2P	3C	Whole school
Attendance	95.8%	94.2%	93.7%	97.8%	96.8%	96.0%	94.9%	95.7%
Class	3M	4B	4T	5L	5P	6H	6R	
Attendance	96.2%	96.0%	96.4%	97.6%	94.6%	94.2%	95.8%	

1 st	2 nd	3 rd
1G	5L	2W



DISCOVERY
EDUCATIONAL TRUST

Chief Executive Officer: Mr R Duff

Larchwood Primary School is proud to be part of the Discovery Educational Trust



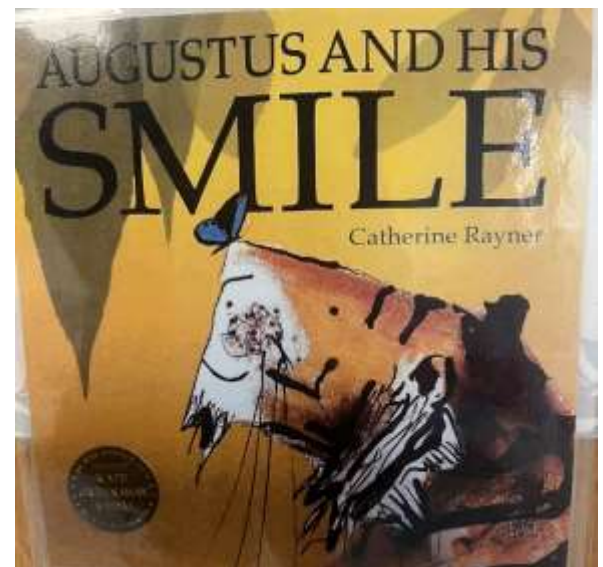
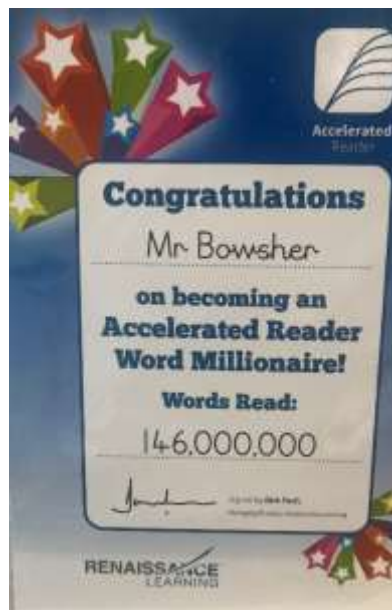
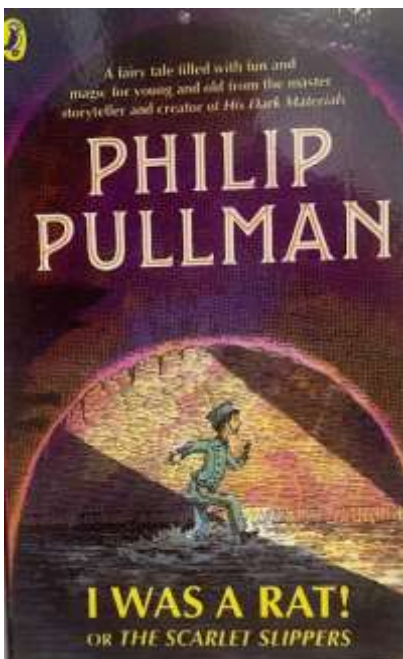
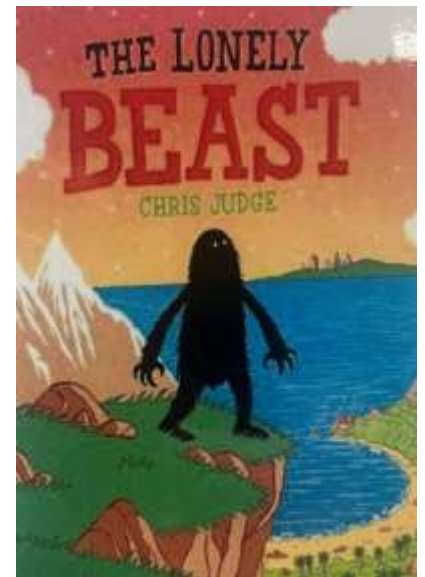
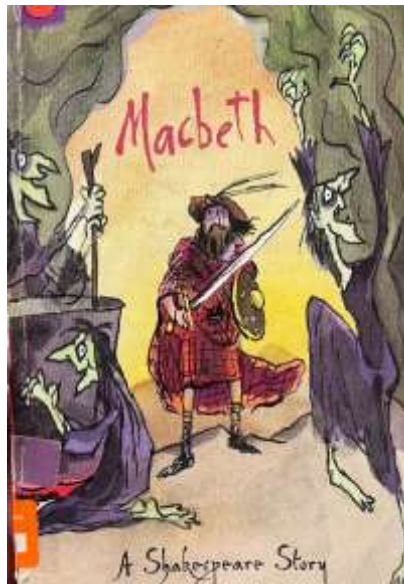
www.larchwoodprimary.co.uk



@LarchwoodPS



office@larchwood.essex.sch.uk



Chief Executive Officer: Mr R Duff

Larchwood Primary School is proud to be part of the Discovery Educational Trust



www.larchwoodprimary.co.uk



@LarchwoodPS



office@larchwood.essex.sch.uk